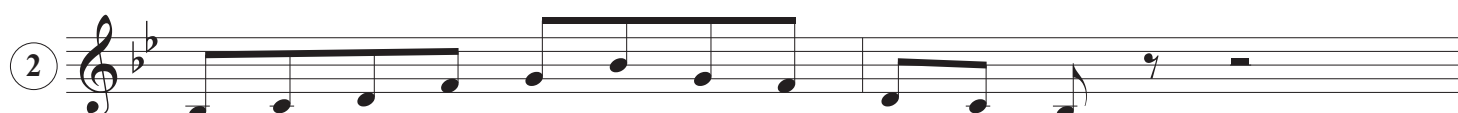


PENTATONIC BLUES

Darren Lloyd

B \flat 7

In the two blues choruses, number 1, I am only using the Blues scale!

B \flat 7E \flat 7

F7



In the two blues choruses, number 2, I am using the pentatonic for the chords.

So, if you see an E \flat 7 chord, play the E \flat pentatonic. Even though E \flat 7 is chord V in the key of A \flat (you can of course try this). I prefer this way, as it is simply (at first) play what you see.

B \flat 7 = B \flat pentatonic

E \flat 7 = E \flat pentatonic

F7 = F pentatonic

Whatever dominant chord it is, simply play that pentatonic.

B \flat 7 (G blues scale)E \flat 7 (C blues scale)

F7 (D blues scale)



I like to also use the relative minor blues scale, I then get an extra note (the bluesy sounding minor 3rd).